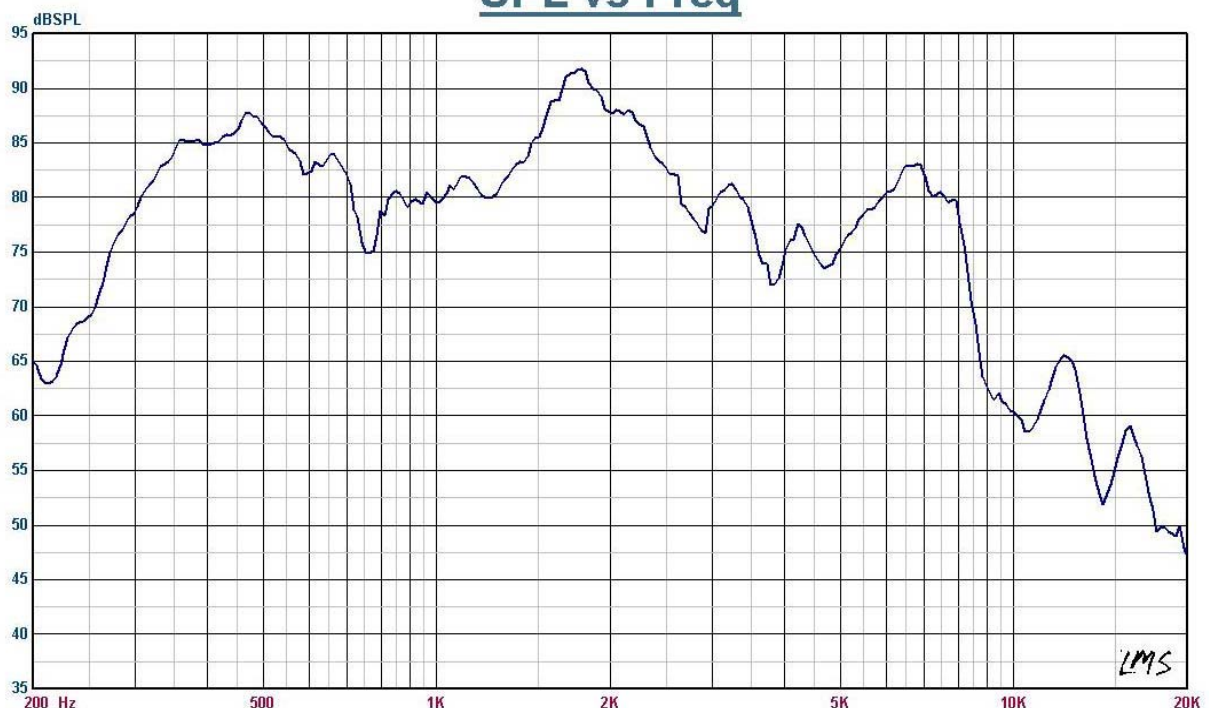


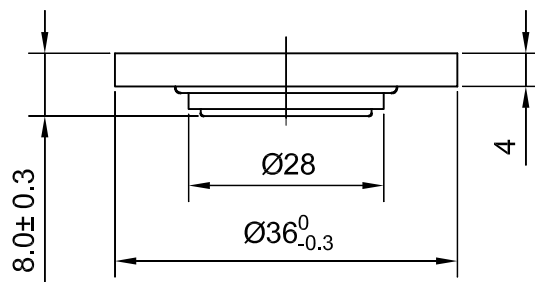
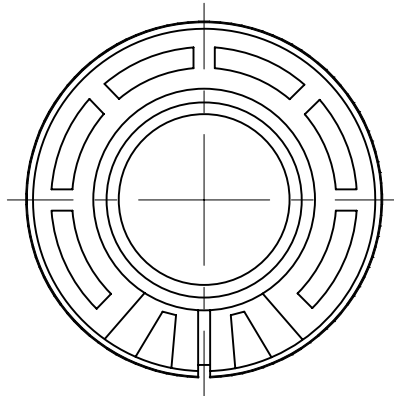
# Speaker Specification

Customer's Model No.		Customer				
Kepo Model No.		KPSP3685PF-08/0.25A	Size	Φ 36mm	No.	J18288
No.	Item	Specification	Test Condition			
1	Impedance	$8\Omega \pm 15\%$	at 800Hz			
2	Resonant Fr. ( $f_0$ )	450Hz $\pm$ 20%				
3	Frequency Range	F0-4.0KHz				
4	Rated Power	0.25W				
5	Max Power	0.3W				
6	S.P.L.	80 $\pm$ 3dB	0.5W / 0.5M at 1.0kHz			
7	Distortion	Max 5%	at rated power 1.0kHz			
8	Sweep Test	must be normal	at sine wave 1.4 V			
9	Load Test	after test meet item 8	rated noise power, 24 Hrs.			
10	Heat Test	after test meet item 8	50 $\pm$ 2 $^{\circ}$ C 5Hrs.			
11	Cold Test	after test meet item 8	-20 $\pm$ 2 $^{\circ}$ C 5Hrs.			
12	Humidity Test	after test meet item 8	40 $\pm$ 2 $^{\circ}$ C, 90/95%R.H. 5Hrs.			
13	Weight					
14	Polarity Test	When supplied plus D.C. voltage to (+) terminal, the cone must move to forward.				
15	Note					

## SPL vs Freq



# Dimensions:



FIRST ANGLE PROJECTION

UNIT : mm  
Tolerance :  $\pm 0.2$